

Integrated Motion Controller and Driver for 5-phase stepper motor

MD5130D is 1-axis, MD5230D is 2-axis Integrated Motion Controller and Driver for 5-phase stepper motor with bipolar pentagon drive system. A built-in EEPROM is for reading and writing driving parameter values and the user program of up to 1000 steps. The software "MD Operation Tool" is attached which can edit and register configuration data and a user program.

**[Features]**

**●Integrated Motion controller and driver**

MD5130D/MD5230D are the integrated motion controller with motion control function and microstep driver for 5-phase stepper motor. The user can easily set configuration and operations using the attached software.

**●User program**

The user can register various driving parameters and the user program of up to 1000 steps by 27 kinds of commands for MD5130D, 36 kinds of commands for MD5230D.

Thereby the complex operation can easily be performed by registering them in advance.

**●Various acceleration/deceleration mode**

There is various acceleration/deceleration driving: constant speed, trapezoidal acceleration/deceleration (symmetry/ non-symmetry) and S-curve acceleration/deceleration driving. In addition, a simple mode is available that does not require a start speed setting.

**●Step out detection**

If the differential between real position and logical position by an encoder signal is more than a specified value, it detects a step out error.

**●Microstep**

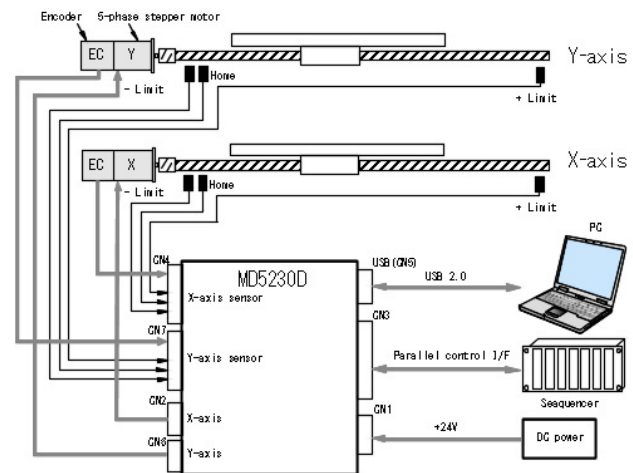
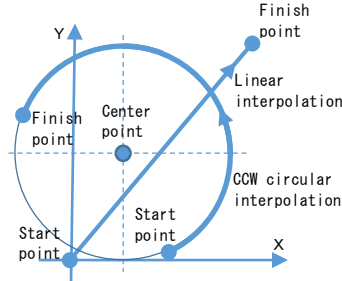
Microstep resolution is available 16 different resolutions, divided from 1 to 250.

**●Low vibration drive**

Microstep driver with low vibration function achieves a smooth drive in low-speed driving.

**●Interpolation function [MD5230D]**

MD5230D can execute linear and circular interpolation in XY orthogonal coordinates. Continuous interpolation can also be executed that performs a series of interpolation processes such as linear interpolation → circular interpolation → linear interpolation → ...

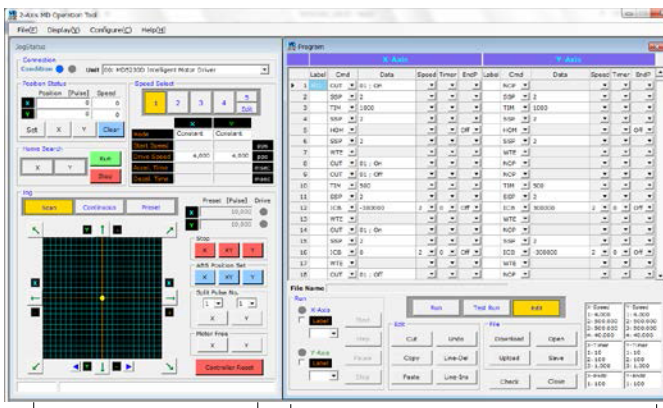


System Configuration Example of MD5230D

**MD operation tool**

The attached software "MD Operation Tool" to set and control from PC is equipped. Connect to PC with USB cable and the user can register configuration data and a user program, operate jog feed and perform a user program using "MD Operation Tool"

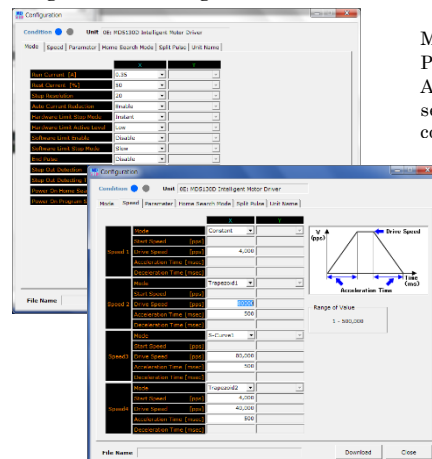
**■Main window**



Jog, speed setting home search, excitation off and so on can be executed in manual operation.

It executes to edit the program, download it to the unit and so on.

**■Configuration setting window**



Mode · Speed · Parameter · Automatic home search are configured.

## Specifications

Specifications	MD 5 1 3 0 D	MD 5 2 3 0 D
<b>■ Drive functions</b>		
Control axis	1 axis	2 axes
Drivable Motor	5-phase stepper motor with 5 leads or 10 leads	
Driving Current	0.35 ~ 1.4A / phase (selectable from 16 kinds)	
Driving System	Bipolar pentagon drive system Microstep drive	
Microstep Resolutions	1, 2, 4, 5, 8, 10, 16, 20, 25, 40, 50, 80, 100, 125, 200, 250(16 kinds)	
Auto Current Reduction	It sets rest current to run current by percentage, selectable from 16 kinds, 25% to 100%	
<b>■ Control Function</b>		
Speed Setting	<ul style="list-style-type: none"> <li>Speed setting number : 4/each axis (Mode, Start speed, Drive speed, Acceleration Time, Deceleration Time)</li> <li>Mode: Constant, linear acceleration/deceleration (Trapezoid) (with / without Start speed), non-symmetry linear acceleration/deceleration, S-curve acceleration/deceleration (with / without Start speed)</li> <li>Drive speed, Start speed: Setting range 1pps ~ 500kpps</li> <li>Acceleration Time, Deceleration Time: Setting range 1 ~ 10000msec</li> </ul>	
Driving Mode	Automatic home search / Scan driving / Continuous driving / Preset driving / Program driving	
Automatic Home Search	<ul style="list-style-type: none"> <li>Automatically executes High-speed home search (Step 1) → Low-speed home search (Step 2) → Low-speed encoder Z-phase search (Step 3) → High-speed offset drive (Step 4)</li> <li>Each step of search direction and enable/disable can be specified.</li> </ul>	
Program Function	<ul style="list-style-type: none"> <li>Memory media EEPROM</li> <li>Steps 1000</li> <li>Commands 27 Commands</li> <li>Power On Program Start Function</li> </ul>	<ul style="list-style-type: none"> <li>Memory media EEPROM</li> <li>Steps 1000/each axis</li> <li>Commands 36 Commands</li> <li>Power On Program Start Function</li> </ul>
Communication commands	Communication commands that controls a unit with USB cable from the program on PC created by VB and VC.	
Interpolation	—	<ul style="list-style-type: none"> <li>Linear interpolation</li> <li>Circular interpolation</li> <li>Continuous interpolation</li> </ul>
Step Out Detection Function	<ul style="list-style-type: none"> <li>Monitors the difference between the logical and real positions, and if detects the abnormal difference, motor rotation stops.</li> <li>Step Out Differential can be set.</li> </ul>	
Encoder Scaling Function	Function to set the scale in order to match the count value of logical and real positions for motor rotation.	
Pulse Scaling Function	Function to set the scale in order to input and display the specified position and logical position according to the actual moving distance (mm).	
Hardware Limit	<ul style="list-style-type: none"> <li>Number of input signals 2 (each 1 for + and - direction)</li> <li>Stop signal active level can be set.</li> <li>Stop mode Instant / Slow is selectable.</li> </ul>	
Software Limit	Stop mode Instant / Slow is selectable.	Each axis +direction, -direction
Input Signal	<p>【Axis sensor signal】 (Each axis) Encoder A / B phase input, Encoder Z phase input, Home, Limit signal (1point each +,-direction), Emergency stop, General input 2points</p> <p>【Parallel control signal】 External reset signal input, Automatic home search start input, Program driving start input, Motor stop input, Program designation 0~5 input, Driving mode designation 0, 1 input, Axis assignment (MD5230D)</p>	
Output Signal(Each axis)	Split pulse output, general output, General output 2 signals, Output during driving / End pulse, Error output Open collector output, DC30V or less and 60mA or less	
Control Interface	<ul style="list-style-type: none"> <li>Parallel control I/F</li> <li>USB (USB standard V2.0 compliant)</li> </ul> The maximum of 16 units can be connected to one PC with USB cable.	
<b>■ Others</b>		
Input power	DC 24V (3A MAX.)	DC 24V (6A MAX.)
Ambient Temperature	0 ~ 40°	
Ambient Humidity	0 ~ 85%RH (No Condensation)	
Mass	245g	429g
Package Dimensions	108mm (Height) × 34mm (Width) × 95mm (Depth) (except projecting part)	130mm (Height) × 46.5mm (Width) × 98.5mm(Depth) (except projecting part)
Accessory	<ul style="list-style-type: none"> <li>CN1 : XW4B-03B1-H1 (Omron) or equivalent 1</li> <li>CN3 : 20P MIL standard 2.54mm connector 1</li> <li>USB cable (1.5m)</li> </ul>	<ul style="list-style-type: none"> <li>CN2/6 : XW4B-05B1-H1 (Omron) or equivalent</li> <li>CN4/7 : 16P MIL standard 2.54mm connector</li> </ul> *CN6 and CN7 are attached to only MD5230D
System Requirements for the Software	Windows 8.1 (32/64bit), Windows 7 (32/64bit), Vista (32/64bit), XP (32/64bit)	

Windows, Windows XP, Windows Vista, Windows 7 and Windows 8.1 are registered trademarks of Microsoft Corporation.  
The Specifications may change without notice due to the technical development. 2015.5

Distributor



达格美 (上海) 集成电路有限公司  
TAKUMI (SHANGHAI) INTEGRATED CIRCUIT CO.,LTD.

地址: 上海市浦东新区张杨路188号汤臣中心B栋801室  
电话: 021-5840-8299 E-mail: dgms@takumi-hkg.com  
传真: 021-5840-1590 WEB: www.takumi-sh.com